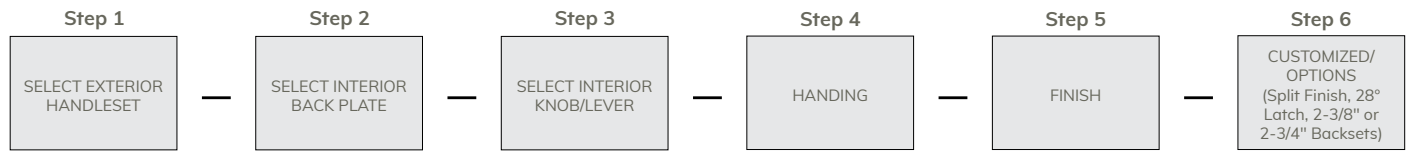


# HOW TO ORDER AN ENTRANCE HANDLESET



**1** Choose a one or two piece entrance handleset

(See pages 5-8 for the various handleset styles)

**2** Choose a one piece Full Plate or choose a two piece Rosette interior

Center to center for all will be 5 1/2" Interconnected

**3** Choose your Knob or Lever

**4** Handing Instructions

Standing OUTSIDE the private area, regardless of whether the door swings towards you or away from you, if the Hinges are on the left, order a Left Hand (LH) lock. Likewise, if the Hinges are on the right, order a Right Hand (RH) lock.

**5** Choose your Finish

Select your finish (Handleset finish chart on page 8)

US10B OIL RUBBED BRONZE	USD10B AGED BRONZE	US15 SATIN NICKEL	USD15A AGED PEWTER	US19 BLACK	US26 POLISHED CHROME	US4 SATIN BRASS
-------------------------------	--------------------------	-------------------------	--------------------------	---------------	----------------------------	-----------------------

**6** Customized Options

2-3/8" or 2-3/4" Backset

28 Degree Latch  
Requires less rotation on the lever to to open the door.

Split Finish

Mix & match a different finish on your interior and exterior on your door

# HANDLESET FINISH OPTIONS

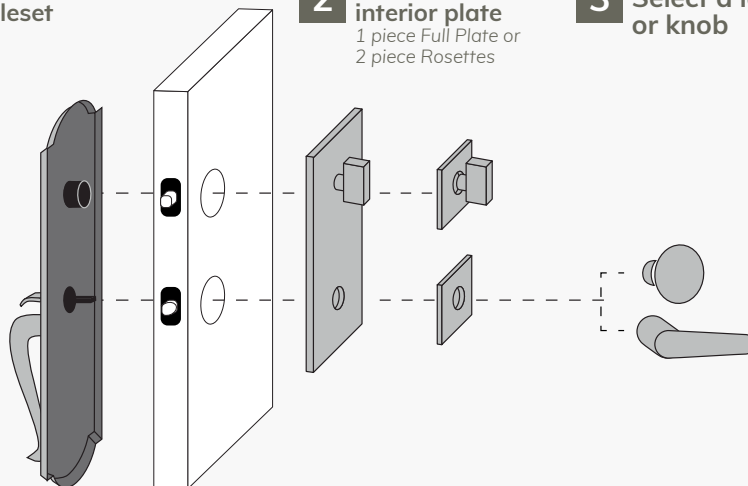
	US10B OIL RUBBED BRONZE	USD10B AGED BRONZE	US15 SATIN NICKEL	USD15A AGED PEWTER	US19 BLACK	US26 POLISHED CHROME	US4 SATIN BRASS
980G-2 Handleset	•	•	•	•	•		
980G-1 Handleset	•	•	•	•	•		
916 Handleset	•		•				
913 Handleset	•		•				
919 Handleset	•		•				
915 Handleset	•		•		•		
990 Handleset	•		•	•			
973 Handleset	•		•		•	•	•
972 Handleset	•		•			•	•
971 Handleset	•		•			•	•
970 Handleset	•		•			•	
-615 Interior Plate	•		•	•	•	•	
-616 Interior Plate	•		•	•	•		
-672 Interior Plate	•		•		•	•	•
-690 Interior Plate	•		•	•			

## HOW TO ORDER A HANDLESET & INTERIOR

**1** Select an exterior Handleset

**2** Select an interior plate  
1 piece Full Plate or  
2 piece Rosettes

**3** Select a lever or knob



**4** Select handing  
Right or left swing door

**5** Select a finish

**6** Customization  
28° latch / split finish  
Specify backset